

Whirlpool



Installation Guide

Models:

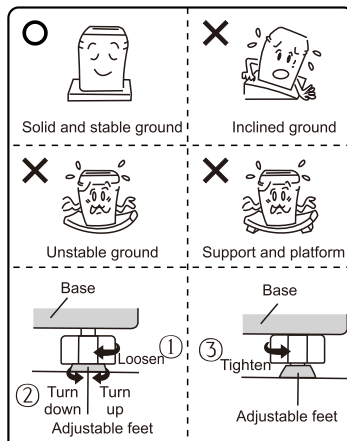
VWED9002IG
VWED1202IG

- Please read this manual carefully before using this machine, and please keep it in a safe place.
- When the washing machine is not in use, the water tap must be turned off and the power cord must be unplugged.
- This machine is manufactured with reusable materials. Please assist in proper disposal or recycling when disposing to protect the environment.
- This machine may be subjected to changes in structure and performance parameters in the future without prior notice.

Installation Instructions

Location of the washing machine

1. Choose a dry place out of sunlight to place the washing machine.
2. Place the washing machine on a solid, stable floor.
3. The floor where the washing machine is installed should have a floor drain, and the floor drain should be unobstructed. At the same time, the floor drain should be flat with or slightly lower than the surface on which the washing machine is installed to prevent water leakage of the washing machine and cause harm.
4. Make the washing machine stand as stable as possible. If necessary, level the washing machine by adjusting the adjustable feet of the washing machine in the order shown. The maximum allowable inclination of the washing machine placement surface is 2°.
5. Minimum installation distance from the wall or installation cabinet is 10cm.

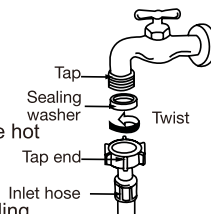


- Note:**
- When the washing machine is placed on the floor or a flexible support, vibration of the washing machine may be caused.
 - Installing the washer on a carpeted floor may cause vibration issues. If you must install it on carpet, make sure not to block the ventilation openings on the bottom of the washer.

Connecting the water inlet hoses

Install the water inlet hoses to your hot and cold water taps, as described below.

- Check and ensure that the sealing washers are firmly in place.
- Attach the straight end of the hose to your water taps. Make sure to attach the hot water supply hose (with red markings) to the hot water tap and the cold water supply hose (with blue markings) to the cold water tap.
- Tighten the coupling nuts securely by hand, as illustrated on the right (the sealing washer is part of and located inside the tap end).
- Attach the curved end of the hose to the corresponding inlet valve of the washer.
- Tighten the coupling nuts securely by hand, as illustrated below.
- Tighten the nut by turning it clockwise while holding the hose. (To detach the water supply hose, turn the nut anticlockwise after turning the tap off.)



- Turn on the taps and check for leaks. Tighten the coupling nuts firmly if there is any leakage. If your water pressure is strong, close the water tap completely, then open it slightly.

IMPORTANT!

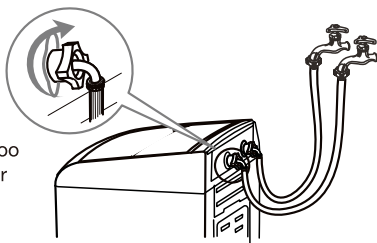
Both the hot water and cold water hoses must be connected to your taps.
Make sure your hot water from the tap is no hotter than 60°C.

- CAUTION!** When tightening the clamping nut, take care not to damage the water inlet valve joint. Apply force evenly and do not twist the water inlet valve.

Installation Instructions

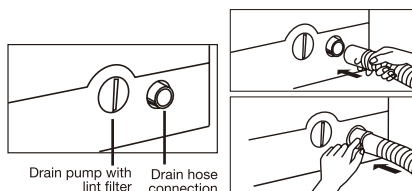
CAUTION! Use only the new (supplied) hoses with your new appliance. Do not use a hose from an existing machine, or one that has been used previously.

CAUTION! In the event that the hoses are too short for your set-up, please seek advice from your local washing machine store to purchase a longer hose.



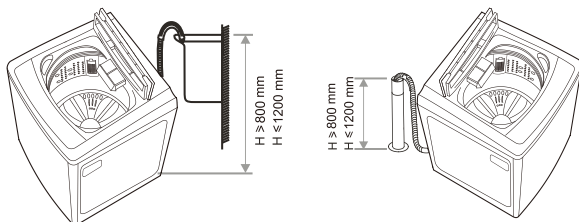
Installing the drain hose

- The drain hose and drain pump filter are located at the back of the machine, as illustrated below, left.
- Pinching the two bands of the clamp on the drain hose, connect it to the drain hose connection at the back of the washer, as illustrated below.
- When the washer is in use, put the drain hose into a drain spout (or into a sink/tub).



CAUTION!

- While the washer is in use, make sure the height of the drain hose is at least 80cm, otherwise the washer will not work well, or the water may flow out in the course of washing. Also ensure the drain hose is not higher than 120cm above ground, otherwise the washer will not drain water well.
- Never lay down the drain hose, as water will be discharged.
- Be sure the drain hose is properly routed so it will not kink or lift off the sink.



Using the rollers

The washing machine is equipped with two rollers at the back that you can use to move the machine more easily. Tilt the washing machine by about 30 degrees and push forward, or pull backward, while holding the machine securely on both sides with your hands, as illustrated below.

Do not move the machine on the rollers on uneven ground, which can damage the rollers.

CAUTION: Take care of your back! Do not tilt the washing machine too much, which could cause injury.

